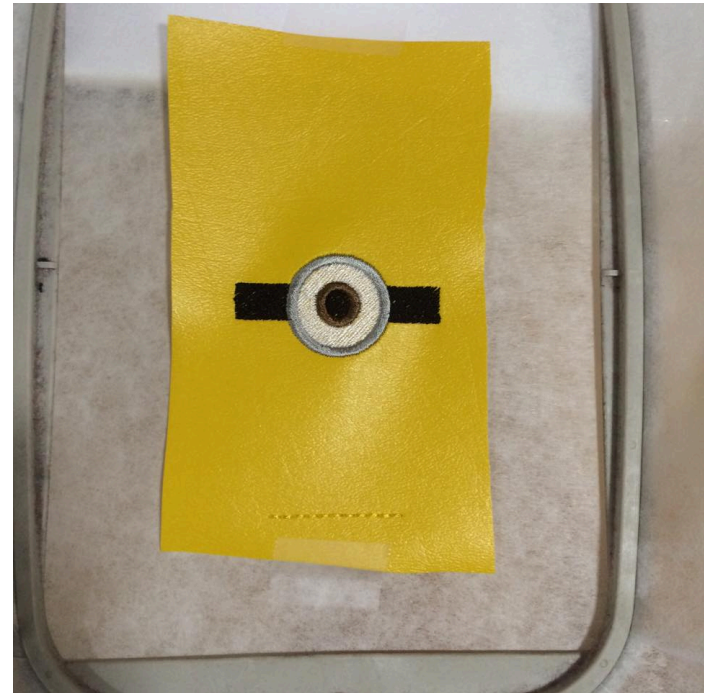


## Hand Sanitizer Holder – Generic Instructions

1. Hoop stabilizer and run placement stitch.



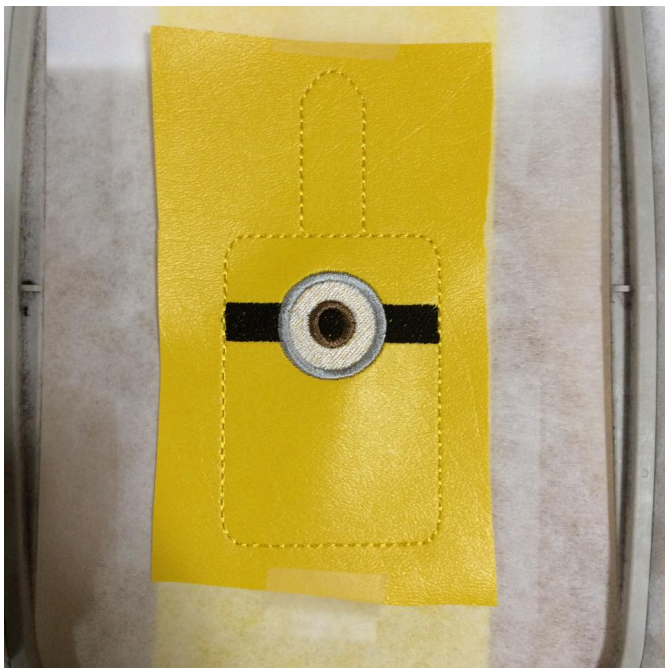
2. Place felt/vinyl/fabric of choice over placement and stitch all details, including the line at the bottom of the holder.



3. Remove hoop from machine and place 2 pieces of felt on the back side, one overlapping the other slightly, creating an “envelope” to slide the bottle into. Tape in place and return hoop to machine.



4. Run final outline stitch.



5. Remove from hoop, trim, and insert hand sanitizer from the back.

